

REGIONAL OFFICE OF EDUCATION #3
BOND – CHRISTIAN – EFFINGHAM -
FAYETTE – MONTGOMERY COUNTIES



ANNUAL REPORT
JULY 1, 2016 – JUNE 30, 2017

Julie Wollerman, Regional Superintendent

Marchelle Kassebaum, Assistant Regional Superintendent (end 6/30/2017)

Annette Hartlieb, Assistant Regional Superintendent (current)

BOND	CHRISTIAN	EFFINGHAM	FAYETTE	MONTGOMERY
207 N. 2nd St. Greenville, IL 62246 618/664-0121	101 S. Main St. Taylorville, IL 62568 217/824-4730	101 N. 4th Effingham, IL 62401 217/342-4363	1500 W. Jefferson St. Vandalia, IL 62471 618/283-5011	203 S. Main St. Hillsboro, IL 62049 217/532-9591
<i>www.roe3.org</i>				



Mission Statement

The mission of the Regional Office of Education for Bond, Christian, Fayette, Effingham and Montgomery Counties is to provide services and systems of support that promote strengthened abilities, self-worth, and a foundation on which to build for our children and their future.

Serving Schools ~ Protecting Students ~ Leading for Excellence

Overview

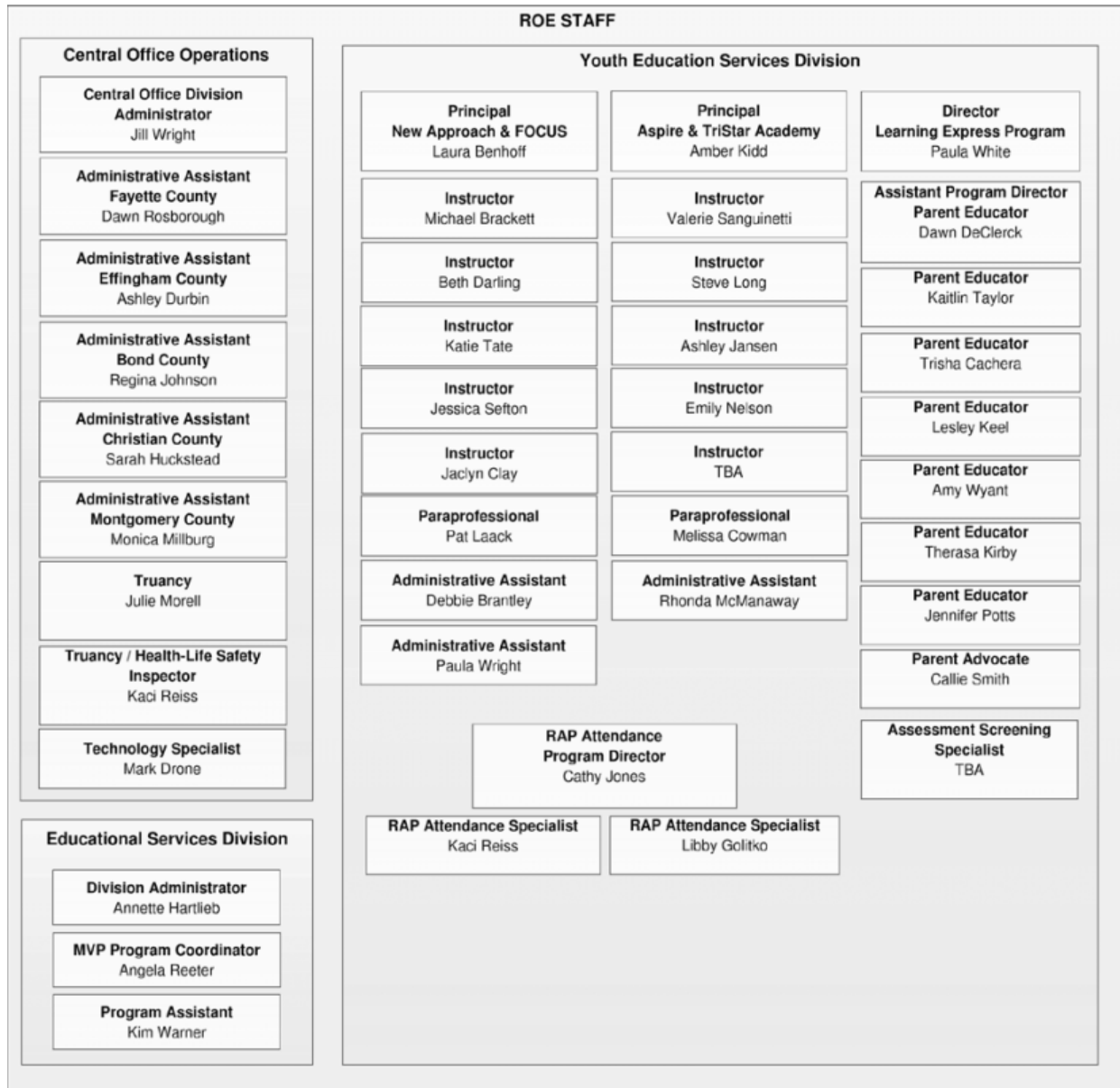
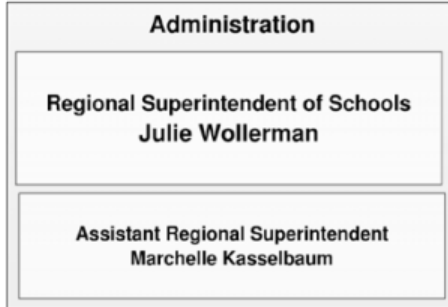
The Regional Office of Education for Bond, Christian, Effingham, Fayette, and Montgomery Counties is a multi-county, intermediate service agency that works in conjunction with the Illinois State Board of Education and the twenty public school districts and numerous private and parochial school systems located within the Region's boundaries. A Regional Superintendent of Schools is elected by the voters of the Educational Service Region to supervise the schools within the Region and to administer the programs and services of the Regional Office of Education. An Assistant Regional Superintendent of Schools is appointed by the Regional Superintendent with the approval of the county boards. The salaries of the Regional Superintendent and the Assistant Superintendent are established by the Legislature and are paid by the State of Illinois. The Bond, Christian, Effingham, Fayette, and Montgomery County Boards provide funding to pay for Regional Office of Education administrative assistants, general office operations, and for the multi-county attendance officer and Health/Life/Safety Inspector. The salaries and expenses of other programs and services provided by the Regional Office of Education are funded by State and Federal grants.

The Illinois statute (105 ILCS 5/3-6) governing this financial report specifies that the Regional Superintendent present books and vouchers for inspection. It also specifies that the Regional Superintendent shall present a written report to the county board(s) stating the balance on hand since the last report, the amount distributed to each school district treasurer, and the current balance on hand, as well as a report of the status of the institute fund and all other funds in his/her care, custody or control.

This report is intended to give a broad overview of financial status of, and the numerous services provided by the Regional Office of Education, yet it does not attempt to provide in-depth information pertaining to either. Additional information, including inspection of books and vouchers, is available upon request. Please contact the Regional Superintendent of Schools for assistance.



Organizational Chart for 2016-2017:





Legal Reference for Annual Report

This Annual Report is designed in part to meet the provisions of Chapter 105, Article 3, Section 5/3-6 and Section 5/3-15.8 of the School Code of Illinois. The report of schools visited and meetings attended as required by Section 5/3-5 is provided quarterly to the Bond, Christian, Effingham, Fayette, and Montgomery County Boards. In addition, as established in Chapter 105, Article 2, Section 5/2-3.62 in the School Code of Illinois, the Regional Office of Education shall provide services to support administrators and teachers in the planning, implementation, and evaluation of education for computer technology education, mathematics, science, and reading. The Regional Office of Education may provide training, technical assistance, coordination and planning in other program areas such as school improvement, career guidance, alcohol/drug education and prevention, early childhood education, and alternative education.

Representative Activities and Duties of the ROE Staff

The Regional Office of Education staff:

- Issued new teaching licenses and registered licenses in the Bond, Christian, Effingham, Fayette, and Montgomery region. We also notified and trained teachers in the ELIS licensure system as well as various areas of educational interests.
- Visited each of the 65 public school buildings in the Region to monitor health/life safety requirements.
- Appointed and trained instructors for school bus driver classes, scheduling 5 initial bus driver training classes for 16 new drivers and 11 bus driver refresher classes for 223 drivers.
- Conducted compliance and monitoring visits for school districts in accordance with Illinois State Board of Education rules and regulations.
- Reviewed and approved, or returned for correction, numerous State Board of Education reports and applications filed by Bond, Christian, Effingham, Fayette, and Montgomery County school districts.
- The Regional Superintendent of Schools and the Assistant Regional Superintendent served on the following committees: Greenville Community to Greenville College Advisory Committee, IARSS Executive Board, Legislative and Student Services Committees, IL Coalition for Educating At-Risk Youth, Curriculum Cooperative, Illinois Pupil Transportation Advisory Council, Family Centered Services Committee, Area Planning Committee for Lake Land and Kaskaskia areas, Montgomery County CEO, Christian County CEO, Juvenile Justice Council for the 4th Judicial Circuit, and all five County Stakeholder groups.
- In the performance of their duties, the Regional Superintendent and Assistant Superintendent traveled approximately 15,000 miles, which included visiting schools, presenting programs, providing in-service training and representing education on various committees.
- The Regional Superintendent of Schools and Assistant Regional Superintendent are frequently called upon to conduct research in an attempt to provide legal opinions on educational issues for use by school administrators, school attorneys, school board members, teachers, and the general public. This service is provided in keeping with the Illinois Compiled Statutes (105 ILCS 5/3-10)



that establishes the Regional Superintendent as a source of official interpretation of school law and educational policy.

- Each year the Regional Office works with the Teachers’ Retirement System to meet with teachers who are facing the prospect of retirement. This service makes it convenient for teachers who have concerns about their upcoming retirement to get personal, authoritative, face-to-face answers to their important questions.

Budget – Bond, Christian, Effingham, Fayette, and Montgomery Counties

Local funds are provided by Bond, Christian, Fayette, Effingham, and Montgomery Counties to support operation of the Regional Office of Education. The following budget and expenditure figures are based on the Counties’ fiscal year, which runs from December 1st through November 30th. This does not include other funds that are received from other governmental agencies, consortiums, partnerships, and State and Federal sources. FY16 is the first year Christian and Montgomery Counties were included in the budget for ROE #3.

BOND, CHRISTIAN, EFFINGHAM, FAYETTE & MONTGOMERY COUNTIES BUDGET							
	FY15 Budget	FY15 Actual	Pct	FY16 Budget	FY16 Actual	Pct	FY17 Budget
Salaries	\$143,735	\$144,561	100.57	\$210,350	\$207,511	98.65	\$198,174
Operations & Other	\$58,265	\$54,092	92.83	\$92,541	\$78,600	84.93	\$88,521
TOTALS	\$202,000	\$198,653	98.34	\$302,891	\$286,111	94.46	\$286,695

Institute Fund Report

The majority of expenditures from the Institute Fund were used to assist local school districts in providing professional development programs to their staff. The staff of the Regional Office of Education performs a number of services for administrators and teachers throughout the year.

INSTITUTE FUND FINANCIAL REPORT July 1, 2016 through June 30, 2017		
Beginning Fund Balance – July 1, 2016		\$116,430.48
RECEIPTS		
Registration and Application Fees	\$33,615.21	
Miscellaneous	510.00	



Total Receipts		\$34,125.21
DISBURSEMENTS		
Professional Dev Services	\$40,428.13	
Other Purchased Services	\$ 3,787.77	
Total Disbursements		\$44,215.90
Ending Fund Balance – June 30, 2017		\$106,339.79

Regional Board of School Trustees

The Regional Board of School Trustees is an elected body with the sole responsibility of action on detachment/annexation petitions regarding boundary changes between school districts in the region. The board meets on the first Monday of January, April, July and October. The President may call special meetings. Meetings may be cancelled due to lack of agenda items. The Regional Superintendent of Schools is the *ex-officio* Secretary for the Regional Board of School Trustees. The members of the Regional Board of School Trustees are:

	Term Expires		Term Expires
Abby Bayles, Vandalia, Fayette County	May 2019	Don Scott, Taylorville, Christian County	May 2023
Eugene Logue, Altamont, Effingham County	May 2023	J.D. Vieregge, Vandalia, Fayette County	May 2021
Jim Rice, Greenville, Bond County	May 2023		
Open Seat, Any County		Open Seat, Montgomery County	

Bond, Fayette, Effingham Regional Vocational Education System

The Regional Office of Education serves as the fiscal agent for the Bond, Fayette, and Effingham County Regional Vocational Education Delivery System. All secondary schools in the state are currently mandated to participate in the Education for Employment (EFE) initiative which highlights regional delivery for vocational education programs.

The System Director, Nick Casey, notes regional activities which include: providing teacher in-service programs, instituting vocational education curriculum improvements and expansion and applying financial support funding through federal and state sources. Teacher in-service programs help teachers



stay current with new technological developments in private business and industry.

Financial support is provided by regional grants through federal and state appropriations and local credit generated reimbursements. The director applies for financial support grants annually, administers activities and supervises federal and state rules/regulations and policies governing expenditures. He must annually review evaluations and regional vocational education programs and supply documentation to the State Board of Education regarding compliance.

The regional delivery of vocational education programs is a process intent on efficiently providing quality programs that are accessible to all students in the participating school districts.

Bond, Christian, Effingham, Fayette, and Montgomery County Resource Library

The Educational Services Division of the Regional Office of Education maintains a lending library of educational resource materials that are available to the region’s educators at no cost. The library is maintained by Regional Office of Education staff members. Materials in the library support the Illinois fundamental learning areas, gifted education, technology, the school improvement planning process and the Illinois Administrators’ Academy.

The Regional Office of Education is also in charge of managing three STARLAB portable planetariums. Laura Benhoff oversees the arrangements of pickup and delivery of these resources.

High School Equivalency (GED® and TASC®)

The Regional Superintendent of Schools is delegated with the responsibility of issuing diplomas and transcripts for the state testing programs that result in high school equivalency diplomas in accordance with the Illinois School Code. ROE #3 is no longer a test site for GED®, but began testing with the TASC test in October 2016.

HS EQUIVALENCY DATA FY17						
July 1, 2016 through June 30, 2017						
	Bond County	Christian County	Effingham County	Fayette County	Montgomery County	Totals
Total Number of Testers	19	40	21	36	83	199
Tests Passed – All Parts	7	12	17	23	47	106
Certified	7	14	13	23	45	102

Health/Life/Safety Inspections

The Regional Office of Education schedules and conducts annual walk-through inspections of each school building. After these inspections are concluded, the violations according to the BOCA code are reported to the district superintendent, as well as the Illinois State Board of Education.



The Health/Life/Safety Inspector issues building permits, occupancy permits and certificates of approval for health life safety funds, which are submitted to the regional superintendent for approval. He/she also files grants with the Illinois State Board of Education that deal with school construction. For FY17, Kaci Reiss was the Health Life Safety Inspector for this educational service region and has been through training provided by the Illinois State Board of Education and the Office of the State Fire Marshal.

The following table presents a summary of FY16 Health/Life/Safety inspections:

District	Total Sites	FY16 Notifications	FY17 Notifications	Change
1 Mulberry Grove	2	40	11	-29
2 Bond County	5	97	52	-45
1 Morrisonville	2	25	8	-17
3 Taylorville	6	50	17	-33
4 Edinburg	1	21	9	-12
8 Pana	4	42	19	-23
14 South Fork	2	33	6	-27
201 Brownstown	2	39	14	-25
202 St. Elmo	2	30	5	-25
203 Vandalia	5	27	41	+14
204 Ramsey	2	36	10	-26
10 Altamont	2	35	15	-20
20 Beecher City	2	35	10	-25
30 Dieterich	2	21	12	-9
40 Effingham	7	92	48	-44
50 Teutopolis	3	73	36	-37
2 Panhandle	3	10	14	+4
3 Hillsboro	4	70	38	-32
12 Litchfield	6	28	14	-14
22 Nokomis	4	36	19	-17
TOTALS	66	840	398	-442

Construction and Occupancy Permits

The following table presents a summary of FY17 Construction and Occupancy Permits:

District	New Sites	Repairs/ Renovations	Additions	Total Requested	Approved
1 Mulberry Grove	0	0	0	0	0
2 Bond County	0	4	0	4	4
1 Morrisonville	0	0	0	0	0



3 Taylorville	0	1	0	1	1
4 Edinburg	0	0	0	0	0
8 Pana	0	4	0	4	4
14 South Fork	0	0	0	0	0
201 Brownstown	0	0	0	0	0
202 St. Elmo	0	0	0	0	0
203 Vandalia	0	1	0	1	1
204 Ramsey	0	3	0	3	3
10 Altamont	0	0	0	0	0
20 Beecher City	0	0	0	0	0
30 Dieterich	0	0	0	0	0
40 Effingham	0	4	0	4	4
50 Teutopolis	0	0	0	0	0
2 Panhandle	0	0	0	0	0
3 Hillsboro	0	5	0	5	5
12 Litchfield	0	0	0	0	0
22 Nokomis	0	0	0	0	0
TOTALS	0	22	0	22	22

The Regional Superintendent and Assistant Regional Superintendent do annual compliance/monitoring visits to verify personnel records as well as the school’s adherence to various codes and regulations. All 20 districts were visited last year as well as state monitoring of three non-public schools.

Truancy Officer and Truancy Prevention

A truant officer is partially funded by the local school districts, the five counties, and the Regional Office of Education through our direct services fund as part of our intergovernmental agreement with the school districts. It is designed to encourage high-risk students to remain in school and complete diploma requirements. For FY17, Julie Morell served as Truant Officer for Bond, Christian, Fayette and Montgomery Counties. Kaci Reiss served as Truant Officer for Effingham County. Ms. Morell’s and Ms. Reiss’s salaries are funded in part by the counties.

Regular Attendance Program (RAP): The Regular Attendance Program (RAP) has served the five-county region since 1989. RAP works with students in grades K through 9 who exhibit poor school attendance. RAP’s goal is to increase a student’s attendance and create a more positive attitude toward attending school. This is done by working with the student and his/her family to diagnose the problem and find ways to promote better school attendance. RAP also provides a prevention program to students in an effort to avert future truancy. RAP initiated the “Miss School, Miss Out” (MSMO) program for the five-county region.

The MSMO program is a community-wide effort to promote the importance of regular school attendance. RAP specialists work closely with the region’s truancy officer as well as community service agencies and



the judicial system to provide effective truancy measures in our region. Students may be referred to RAP through their home school principal only. Cathy Jones, Libby Golitko, and Kaci Reiss served as the RAP Attendance Specialists.

Youth Education Services: Schools Division - New Approach and Aspire Alternative High Schools

The New Approach Alternative High School was initiated in 1993 to provide Bond, Fayette and Effingham County youth with an alternative education program. New Approach is recognized and accredited by the Illinois State Board of Education. The school works closely with area schools and agencies to provide educational opportunities to a variety of at-risk students. Grades 9 through 12 are served for 14 to 21 year olds who have dropped out of school or are at-risk of dropping out. Students take classes to earn credit towards their home high school diploma or receive the skills necessary to earn a high school equivalency diploma. High school academics, vocational classes, job skills, and parenting techniques in addition to character education are covered in the curriculum. Laura Benhoff serves as principal for the school.

The Aspire Alternative High School was initiated in January of 2005 to provide Effingham County youth with an alternative education program closer to home. Aspire is also recognized and accredited by the Illinois State Board of Education. The school works closely with the New Approach Alternative High School and follows the same format and curriculum. Amber Kidd serves as the principal.

New Approach and Aspire combined have awarded credit to over 1100 high school students from the districts in region three. In addition, they have conferred nearly 300 high school diplomas.

Alternative In-School Suspension Mandate (AIM)

Alternative In-School Suspension Mandate (AIM) is an initiative sponsored by the Regional Office of Education in conjunction with our school districts. AIM's goal is to keep students in school even when the student has made choices resulting in out-of-school suspension. Students are referred to AIM when they have been suspended from their home school based upon administration recommendation. Students have the opportunity to make-up daily work and curricular tests. In many situations, students suspended out-of-school are unsupervised and don't have the adequate resources to do their assignments. With AIM, certified teachers teach and guide students, so they don't fall behind in their studies. In addition, students will have an opportunity to reflect upon the cause of their suspension and how they might better handle decisions in the future. This service is currently provided to the districts at no charge.

Regional Safe Schools Programs - Focusing On Cultivating and Understanding Self-Responsibility (FOCUS) and TriStar Academy

The FOCUS Safe Schools Program was initiated in 1997 to provide public schools with an alternative educational placement for disruptive students. A second site, TriStar Academy, was opened January 2000 in Effingham. Since then, over 500 sixth, seventh, and eighth grade students have been served between



our two sites. As an extension of the sending schools, the safe school mission is to provide a positive learning environment which will improve students' self-esteem and impact their behavioral and educational performance so they may successfully return to their home school. Parents are involved with the program from the initial referral. Students receive daily academics along with social and behavioral skills instruction. Grades six, seven, and eight are served. Students may be referred through their home principal only. Laura Benhoff is the principal for FOCUS and Amber Kidd is the principal for the TriStar Program.

Learning Express Program

Learning Express is a Birth to Three Prevention Initiative program funded by the Illinois State Board of Education Early Childhood Block Grant. This grant began serving families in Christian-Montgomery Counties in 1999. Following the Parents as Teachers Affiliate model, home visiting services are provided to families year-round at no charge. The program is staffed by PAT certified parent educators. The goals of this grant are to have the children arrive at school ready to learn, as well as, support families to become self-sufficient by assisting them with resources to meet personal goals.

School Services

The School Services grant is the general operation funding for the Educational Services Division of ROE #3. The purpose of the grant is to provide base funding so that the ROE is able to provide the following: professional development in the fundamental learning areas; restorative justice/childhood trauma; family engagement; poverty; technology services; directory of cooperating consultants; resource library; Illinois Administrators' Academy services; and school improvement services. These services are discussed in more depth throughout this annual report.

School System of Support (SSoS)

The Regional Office of Education's role in the system of support is to create an effective and collaborative partnership among the region's schools, the Illinois State Board of Education, the Area V SSOS leadership and our own professional development experts. The partnership's goal is to improve teaching and learning which will result in improved student achievement.

Support and assistance were provided through direct professional development training and technical assistance to all schools and districts to help our region's educators achieve the goals and objectives articulated in the state's School System of Support and the Every Student Succeeds Act guidelines.

Professional development and technical assistance under the auspices of SSoS were provided in the areas of English Language Arts, Math, Science, Fine Arts, Family Engagement, Social Studies, Teacher Evaluation, Poverty, Social/Emotional Learning, Standards Based Grading, Physical Education, Trauma, Instructional Strategies, Classroom Management, Integrating Technology, and Assessment.



Christian and Montgomery CEO (Creating Entrepreneurial Opportunities)

The Regional Office of Education #3 is the administrative agent for Creating Entrepreneurial Opportunities (CEO) for Christian and Montgomery Counties. The year-long program is designed to provide a comprehensive educational experience for high school junior and senior students, equipping them to be entrepreneurial thinkers who contribute to the economic development of Christian and Montgomery Counties. The local business community partners with area schools to create project-based experience for student by providing funding, expertise, meeting space, business tours and one-on-one mentoring. The Regional Office of Education #3 assists the CEO advisory board with hiring, employing, contracting, evaluating and supervising the teacher and assistant. The ROE facilitates communication between the class and the participating school districts and advises and assists the CEO advisory board in matters related to student responsibility and safety.

Gifted Education

The Regional Office of Education provides support and training to enhance local school districts' ability to meet the special needs of students in each respective district. Gifted Education is no longer mandated by the Illinois School Code. The Regional Office of Education, however, supports gifted education in the schools and provides recommendations regarding ongoing professional development and recommends qualified trainers.

Illinois Administrator's Academy

Individuals employed in positions requiring a Professional Educator License with an administrative endorsement were required to complete a minimum of one Illinois Administrators' Academy during FY16 in order to maintain their administrator credentials. (105 ILCS 5/5/24A-3). The Regional Office of Education provides Administrator Academy courses each year (at least one course offered quarterly) so that administrators in the educational service region served by the Regional Office of Education have access to courses that fulfill this requirement. The Educational Services Division Administrator is able to access Administrator Academy records for all administrators in the Bond, Christian, Effingham, Fayette, and Montgomery area.

Professional Development

The Regional Office of Education supports a wide variety of activities including workshops, conferences, professional development sessions, meetings, networking, technical assistance, information dissemination, and consulting to meet the needs of the schools in Bond, Christian, Effingham, Fayette and Montgomery Counties. These activities are designed to complement other Regional Office of Education and local district professional development initiatives. The Regional Office of Education's Educational Services Division collaborates with local, regional, and state educational partners representing both the public and private sector in creating learning opportunities for the entire region.



The Regional Office of Education #3 is a leader in providing professional development for teachers and administrators promoting the understanding and integration of the Illinois Learning Standards for Math, English Language Arts, and Science. The focus of the professional development workshops is teaching strategies, classroom implementation and integration.

During the 2016-2017 school year, English Language Arts (ELA) Illinois Learning Standards professional development opportunities included sessions on tools, resources, and strategies to utilize English Language Arts standards across the curriculum. Sessions were offered at both the junior high school/high school level and the elementary level. In addition, a “Writing Matters” workshop was provided to incorporate writing into all subject areas.

Mathematics Illinois Learning Standards professional development sessions focused on classroom implementation. These focused around the new strand of integrated math and model math curriculum. Sessions were offered for both the secondary and elementary levels.

The Next Generation Science Standards have been released and we offered sessions on the standards and how to implement them into the classroom at the elementary, junior, and senior high level.

While the initial professional development sessions were presented by regional and state experts, the strategies and implementation sessions are now being taught by ROE #3 schools’ teacher-leaders who are becoming known throughout Southern Illinois for their effectiveness

The ROE also fulfilled other professional development needs by facilitating session on the following topics: Youth Mental Health; physical education standards and assessment; speaking and listening; poverty; balanced assessment; new teacher mentoring; family engagement; music; physical education standards; teacher evaluation; student learning objectives; social/emotional learning; trauma; and others. In addition, the next Regional Professional Development Conference will be held in October 2018 and will offer a myriad of sessions on a vast variety of educational topics.

Technical Assistance to Schools

Part of the responsibility of the Regional Office of Education is to provide technical assistance to schools and educators as they work to improve curriculum, instruction, and learning. This assistance includes presentations, facilitation, consulting, coaching, and training.

Illinois Century Network – Regional Support System

The Regional Office of Education works closely with the Illinois Century Network to provide a statewide system of inter-network connectivity to schools. The Regional Superintendent, in conjunction with the Effingham County Board, provides office space and services for Chris Watkins, an ICN technical point of



contact and support technician for Areas V and VI (Southern Illinois). The Regional Office of Education was also instrumental in bringing ICN-based community networks into Bond, Fayette, and Effingham Counties, and in doing so, helped forge partnerships between local schools and county and city agencies, while providing inexpensive Internet access to the communities served by ICN.

McKinney-Vento Homeless Children and Youth Program Lead Local Education Agency Liaison – Area V

The McKinney-Vento Homeless Children and Youth Program is part of the “No Child Left Behind” legislation. The Regional Office of Education #3 serves as the Lead Area Liaison (LAL) for Area V, providing training on the requirements of the legislation and technical assistance to school district personnel faced with helping solve educational problems created by homelessness of children and youth. The responsibilities for this grant involve serving five Regional Offices of Education, 83 school districts, 319 school buildings and approximately 557 administrators, 9,509 teachers and 16 shelters/transitional housing agencies. The geographic area served includes 13 counties in central and southwestern Illinois.

Training is provided to school administrators, teachers and front office personnel throughout the year on issues such as: policy and procedures; overcoming barriers to school enrollment; overcoming barriers to school attendance and overcoming barriers to school success. For FY17, Angela Reeter served as the Area V Program Director for this federally funded project.

Curriculum Cooperative

The Curriculum Cooperative which was formed in the fall of 1992, with nine school districts within the Bond-Fayette-Effingham county area. It has expanded its membership to include all twenty districts located in Bond-Christian-Effingham-Fayette-Montgomery county area plus the parochial school districts. The Cooperative meets quarterly to work toward the objectives developed when the group was formally organized. The group discusses new educational initiatives and the professional development needed to support them.



**Bond, Christian, Effingham, Fayette, and Montgomery County Public
 and Parochial School District Directory FY17**

BOND COUNTY	
MULBERRY GROVE COMMUNITY UNIT SCHOOLS	386 Students
<i>DISTRICT NO. 1</i>	36 Teachers
801 W. Wall St., Mulberry Grove, IL 62262	2 Administrators
Phone: 618/326-8812	
Fax: 618/326-8482	Approx. Area: 108.95 Sq. Miles
	Assessed Valuation: \$28,203,011
BOND COUNTY COMMUNITY UNIT SCHOOLS	1746 Students
<i>DISTRICT NO. 2</i>	130 Teachers
1008 N. Hena, Greenville, IL 62246	8 Administrators
Phone; 618/664-0170	
Fax: 618/664-5000	Approx. Area: 229.17 Sq. Miles
	Assessed Valuation: \$166,988,268
CHRISTIAN COUNTY	
MORRISONVILLE COMMUNITY UNIT SCHOOLS	390 Students
<i>DISTRICT NO. 1</i>	36 Teachers
301 School St., Po Box 13, Morrisonville, IL 62546	3 Administrators
Phone: 217/526-4431	
Fax: 217/526-4433	Approx. Area: 108 Sq. Miles
	Assessed Valuation: \$96,572,253



TAYLORVILLE COMMUNITY UNIT SCHOOLS	2541 Students
DISTRICT NO. 3	204 Teachers
512 West Spresser St., Taylorville, IL 62568	8 Administrators
Phone: 217/824-4951	
Fax: 217/824-5157	Approx. Area: 271 Sq. Miles
	Assessed Valuation: \$279,311,189
EDINBURG COMMUNITY UNIT SCHOOLS	306 Students
DISTRICT NO. 4	21 Teachers
100 East Martin, Edinburg, IL 62531	2 Administrators
Phone: 217/623-5603	
Fax: 217/623-5604	Approx. Area: 73 Sq. Miles
	Assessed Valuation: \$46,635,253
PANA COMMUNITY UNIT SCHOOLS	1340 Students
DISTRICT NO. 8	102 Teachers
14 East Main, Pana, IL 62557	6 Administrators
Phone: 217/562-1500	
Fax: 217/562-1501	Approx. Area: 302.5 Sq. Miles
	Assessed Valuation: \$98,252,554
SOUTH FORK COMMUNITY UNIT SCHOOLS	351 Students
DISTRICT NO. 14	27 Teachers
550 Prairie Ave., Po Box 20, Kincaid, IL 62540	3 Administrators
Phone: 217/237-2046	
Fax: 217/237-2245	Approx. Area: 11 Sq. Miles



	Assessed Valuation: \$19,291,081
EFFINGHAM COUNTY	
ALTAMONT COMMUNITY UNIT SCHOOLS	764 Students
<i>DISTRICT NO. 10</i>	58 Teachers
7 S. Ewing, Altamont, IL 62411	5 Administrators
Phone: 618/483-6195	
Fax: 618/483-6303	Approx. Area: 113.84 Sq. Miles
	Assessed Valuation: \$63,322,083
BEECHER CITY COMMUNITY UNIT SCHOOLS	329 Students
<i>DISTRICT NO. 20</i>	30 Teachers
PO Box 98, Beecher City, IL 62414	3 Administrators
Phone; 618/487-5100	
Fax: 618/487-5242	Approx. Area: 101.57 Sq. Miles
	Assessed Valuation: \$53,436,895
DIETERICH COMMUNITY UNIT SCHOOLS	510 Students
<i>DISTRICT NO. 30</i>	38 Teachers
205 Pine St., PO Box 187, Dieterich, IL 62424	3 Administrators
Phone: 217/925-5249	
Fax: 217/925-5447	Approx. Area: 111.39 Sq. Miles
	Assessed Valuation: \$31,691,476



EFFINGHAM COMMUNITY UNIT SCHOOLS	2457 Students
<i>DISTRICT NO. 40</i>	176 Teachers
2803 S. Banker, PO Box 130, Effingham, IL 62401	10 Administrators
Phone: 217/540-1500	
Fax: 217/540-1510	Approx. Area: 127.7 Sq. Miles
	Assessed Valuation: \$482,169,965
TEUTOPOLIS COMMUNITY UNIT SCHOOLS	1045 Students
<i>DISTRICT NO. 50</i>	75 Teachers
801 W. Main, PO Box 607, Teutopolis, IL 62467	4 Administrators
Phone: 217/857-3535	
Fax: 217/857-6265	Approx. Area: 108 Sq. Miles
	Assessed Valuation: \$96,572,253
FAYETTE COUNTY	
BROWNSTOWN COMMUNITY UNIT SCHOOLS	323 Students
<i>DISTRICT NO. 201</i>	30 Teachers
421 S. College, Brownstown, IL 62418	3 Administrators
Phone: 618/427-3355	
Fax: 618/427-3704	Approx. Area: 94 Sq. Miles
	Assessed Valuation: \$18,175,891
ST. ELMO COMMUNITY UNIT SCHOOLS	466 Students
<i>DISTRICT NO. 202</i>	37 Teachers
1200 N. Walnut, St. Elmo, IL 62458	3 Administrators
Phone: 618/829-3264	
Fax: 618/829-5161	Approx. Area: 92.4 Sq.



	Miles
	Assessed Valuation: \$24,185,273
VANDALIA COMMUNITY UNIT SCHOOLS	1,525 Students
<i>DISTRICT NO. 203</i>	133 Teachers
1109 N. 8 th St., Vandalia, IL 62471	8 Administrators
Phone: 618/283-4525	
Fax: 618/283-4107	Approx. Area: 230.98 Sq. Miles
	Assessed Valuation: \$107,399,146
RAMSEY COMMUNITY UNIT SCHOOLS	483 Students
<i>DISTRICT NO. 204</i>	41 Teachers
716 W. Sixth , Ramsey, IL 62080	3 Administrators
Phone: 618/423-2335	
Fax: 618/423-2314	Approx. Area: 139.6 Sq. Miles
	Assessed Valuation: \$21,655,072
MONTGOMERY COUNTY	
PANHANDLE COMMUNITY UNIT SCHOOLS	496 Students
<i>DISTRICT NO. 2</i>	45 Teachers
509 North Prairie St., Raymond, IL 62560	4 Administrator
Phone: 217/229-4215	
Fax: 217/229-4216	Approx. Area: 171 Sq. Miles
	Assessed Valuation: \$60,722,982



HILLSBORO COMMUNITY UNIT SCHOOLS	1805 Students
DISTRICT NO. 3	124 Teachers
1311 Vandalia St., Hillsboro, IL 62049	9 Administrators
Phone: 217/532-2942	
Fax: 217/532-3137	Approx. Area: 264 Sq. Miles
	Assessed Valuation: \$179,500,000
LITCHFIELD COMMUNITY UNIT SCHOOLS	1469 Students
DISTRICT NO. 12	133 Teachers
1702 North State St., Litchfield, IL 62056	7 Administrator
Phone: 217/324-2157	
Fax: 217/324-2158	Approx. Area: 105 Sq. Miles
	Assessed Valuation: \$126,198,060
NOKOMIS COMMUNITY UNIT SCHOOLS	625 Students
DISTRICT NO. 22	54 Teachers
511 Oberle St., Nokomis, IL 62075	4 Administrators
Phone: 217/563-7311	
Fax: 217/563-2549	Approx. Area: 162 Sq. Miles
	Assessed Valuation: \$46,920,247



PAROCHIAL SCHOOLS	
ALTAMONT LUTHERAN INERPARISH SCHOOL	172 Students
7 S. Edwards, Altamont, IL 62411	12 Teachers
Phone: 618/483-6428	1 Administrator
Fax: 618/483-6296	
FIRST BAPTIST CHRISTIAN ACADEMY	50 Students
301 Mary St., Rosamond, IL 62083	9 Teachers
Phone: 217/562-5054	1 Administrator
Fax: 217/562-5055	
SACRED HEART SCHOOL PANA	172 Students
3 East 4th St., Pana, IL 62557	14 Teachers
Phone: 217/562-2425	1 Administrator
Fax: 217/562-2942	
Fax: 217/342-9251	
ST. ANTHONY HIGH SCHOOL	221 Students
304 E. Roadway Ave. Effingham, IL, 62401	18 Teachers
Phone: 217/342-6969	2 Administrators
Fax: 217/342-6997	
ST. ANTHONY GRADE SCHOOL	446 Students
405 N. Second St., Effingham, IL 62401	29 Teachers
Phone: 217/347-0419	2 Administrators
Fax: 217/347-2749	



ST. MARY SCHOOL	133 Students
422 South Washington St., Taylorville, IL 62568	13 Teacher
Phone: 217/824-6501	1 Administrator
Fax: 217/824-2803	
Fax: 618/283-0676	
VISIONWAY CHRISTIAN SCHOOL	210 Students
1124 North Webster St., Taylorville, IL 62568	22 Teachers
Phone: 217/824-6722	1 Administrators
Fax: 217/824-6622	
TOTAL SCHOOL POPULATION SERVED	20,761 Students
	1647 Teachers
	107 Administrators